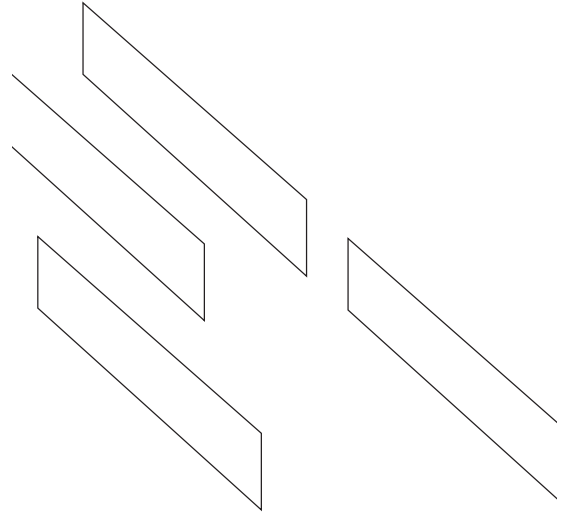


CHARLES RIVA COLLECTION

FRANK
STELLA
JOSH
SPERLING

CURATED BY MATT BLACK



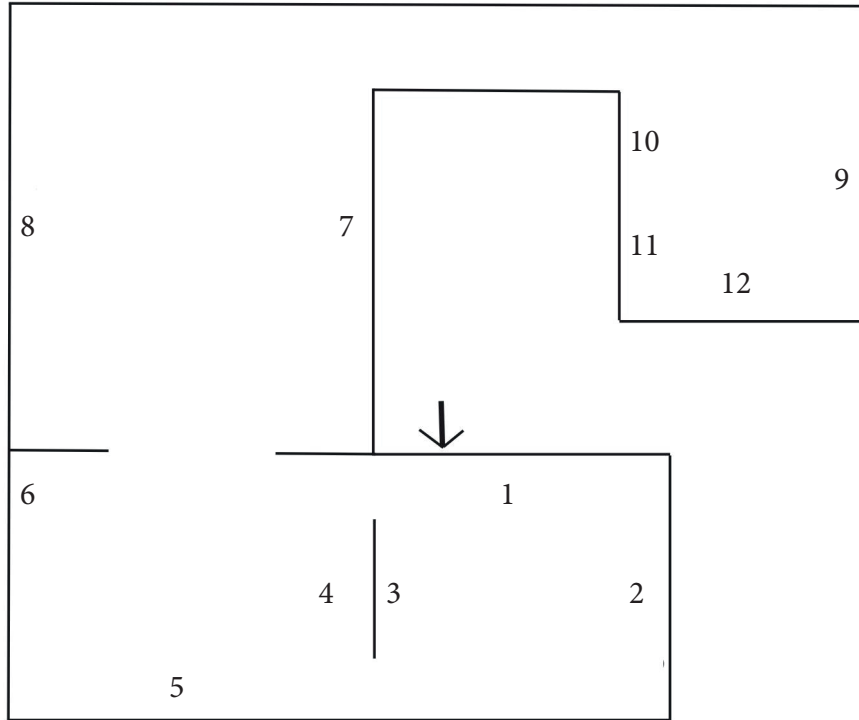
Riva collection is proud to present STELLA / SPERLING, a new exhibition featuring historical works from Frank Stella's "Polish village " series along with new works from American artist, Josh Sperling. The exhibition, curated by Matt Black, creates a vivid and compelling dialogue between two unique body of works. It is an exploration into the idea of painting & sculpture, adding a new chapter in the fascinating history of shaped canvas.

Why make every color, shape, emotion fit into a rectangle? As Donald Judd wrote " A rectangle is a shape itself: it is obviously the whole shape; it determines and limits the arrangement of whatever is on or in it». With a clear desire for the idea of departure, shaped canvases have always been evolving and questioning the idea of painting itself. From Raphael's Tondo to the work of Peter Laszlo Peri or Jasper Johns. The participation of Frank Stella in this lineage is absolutely fundamental. Following Stella's retrospective at New York's Museum of Modern Art (1970), he received Maria and Kasimierz Pietchotka's book *Wooden Synagogues* (1959), as a gift from his friend, the architect Richard Meier in 1970. The inspiration created a transition in his practice from flat to built objects and layered surfaces. Half a century later, Josh Sperling continues this exploration and with his practice challenges the notion of form, surface and space, tackling once again the very idea of what it means to make a painting.

As a curator, my interests have always laid in creating a thread between artists across generations. Josh is a very distinct voice, his sense of composition and color are completely innovative and personal. He plays with themes and techniques in art history and uniquely interprets it into his work. The STELLA/SPERLING exhibition makes for a natural and inspiring dialogue, both playful and seductive, yet absolutely timeless.

Text by Matt Black

CHARLES RIVA COLLECTION



1. Frank STELLA
Felstyn IV, 1971
Mixed media on board
269,2 x 241,3 x 12,7 cm
Charles Riva Collection

5. Josh SPERLING,
Oxymoron, 2021
Acrylic on Canvas
241 x 259 cm

9. Frank STELLA
Targowica (Poster Sketch), 1974
Mixed media on paper
116.2 x 78.4 cm
Private Collection, Belgium

2. Josh SPERLING
Double Bubble II, 2021
Acrylic on canvas
Diameter 73,7 cm

6. Frank STELLA
Piaski (Sketch), 1973
Mixed media on paper
75.6 x 75.6 cm
Charles Riva Collection

10. Josh SPERLING
Double Bubble GG, 2021
Acrylic on canvas
Diameter 73,7 cm

3. Josh SPERLING,
Steady Company, 2021
Acrylic on Canvas
241 x 259 cm

7. Frank STELLA
Bogoria IV, 1971
Mixed media on board
228.6 x 279.4 x 12.7 cm
Private Collection, USA

11. Josh SPERLING
Double Bubble HH, 2021
Acrylic on canvas
Diameter 73,7 cm

4. Frank STELLA
Lunna Wola II, 1973
Mixed media on board
246 x 217,8 x 12,7 cm
Charles Riva Collection

8. Josh SPERLING,
Beyond the Pale, 2021
Acrylic on canvas
197,4 x 373,4 cm

12. Frank STELLA
Narowla, 1972
Mixed media on paper
88,5 x 81 cm
Private Collection, Belgium